



Bathroom Option A

For more information please contact:

Technical Services Europe
Hilton International
Maple Court
Reeds Crescent
Watford WD24 4QQ
United Kingdom

Tel: +44 207 856 8154
Fax: +44 1923 202050

HILTON GARDEN - INN					
INTERNATIONAL BATHROOM OPTION A					
F.F.E SUMMARY SCHEDULE					
Bathroom					
Cntrl No	Item	Supplier	Contact Name	Tele Number	Email Address
INT-BTH-A-01	Floor tile	Porcelanosa	Ian Hughes	+44 (0) 870 8110300	ian.hughes@procelanosa.co.uk
INT-BTH-A-02	Wall tile	Porcelanosa	Ian Hughes	+44 (0) 870 8110300	ian.hughes@procelanosa.co.uk
INT-BTH-A-03	Wall feature strip tile	Porcelanosa	Ian Hughes	+44 (0) 870 8110300	ian.hughes@procelanosa.co.uk
INT-BTH-A-04	Vanity unit top	Domas Tiles	Richard Bull	+44 (0) 208 4819500	richard.bull@domustiles.com
INT-BTH-A-05	Vanity unit facia	Main Contractor	Main Contractor	Main Contractor	Main Contractor
INT-BTH-A-06	Mirror over vanity unit	Matz Design	Reg Lacey	+44 (0)1691 656811	RLacey7680@aol.com
INT-BTH-A-07	Demister pad	Matz Design	Reg Lacey	+44 (0)1691 656811	RLacey7680@aol.com
INT-BTH-A-08	Basin	DURAVIT	Toni Mitchell	+44 (0) 870 7307787	toni.mitchell@uk.duravit.com
INT-BTH-A-09	Basin mixer tap	Wolseley	Sean Collins	+44 (0) 1926 705660	sean.collins@wolesley.co.uk
INT-BTH-A-10	Shower arrangement	Wolseley	Sean Collins	+44 (0) 1926 705660	sean.collins@wolesley.co.uk
INT-BTH-A-11	Shower screen	Aqualux	Colin Henderson	+44 00 7870681922	colin.henderson@aqualux.co.uk
INT-BTH-A-12	WC	Wolseley	Sean Collins	+44 (0) 1926 705660	sean.collins@wolesley.co.uk
INT-BTH-A-13	Toilet roll holder	Waterbury	John Armstrong	+44 (0) 121 3336062	jonh.armstrong@waterburys.co.uk
INT-BTH-A-14	Spare toilet roll holder	Waterbury	John Armstrong	+44 (0) 121 3336062	jonh.armstrong@waterburys.co.uk
INT-BTH-A-15	Facia panel mounted towel pigeon holes	Main Contractor	Main Contractor	Main Contractor	Main Contractor
INT-BTH-A-16	Drying rack	Matz Design	Reg Lacey	+44 (0)1691 656811	RLacey7680@aol.com
INT-BTH-A-17	Single robe hook	Waterbury	John Armstrong	+44 (0) 121 3336062	jonh.armstrong@waterburys.co.uk
INT-BTH-A-18	Door stop	Waterbury	John Armstrong	+44 (0) 121 3336062	jonh.armstrong@waterburys.co.uk
INT-BTH-A-19	Wastebasket	Aslotel	Martin Brown	+44 (0) 1372 362533	martin.brown@aslotel.co.uk
INT-BTH-A-20	Toilet brush & holder	Waterbury	John Armstrong	+44 (0) 121 3336062	jonh.armstrong@waterburys.co.uk
INT-BTH-A-21	Tissue box holder	Aslotel	Martin Brown	+44 (0) 1372 362533	martin.brown@aslotel.co.uk
INT-BTH-A-22	Artwork	Indigo Art Ltd.	Glen Hughes	+44 (0) 151 9339779	glen.hughes@indigoart.co.uk

Alternative products/suppliers may not be applicable to this product due to copyright. Any alternatives should be approved by Hilton

SPECIFICATION CONTROL SHEET – BATHROOM OPTION A

PROJECT : HILTON GARDEN INN CONTROL No : **BTH-A-01**
PROJECT NO : DRAWING REF :
DATE : Oct-07 ITEM : FLOOR TILE
AREA : OPTION A

DESCRIPTION : **Wood effect ceramic floor tile**

CODE : P1910102
COLOUR : **Roble Cognac**
SIZE : **18x65.9cm**
GRADIENT : G9

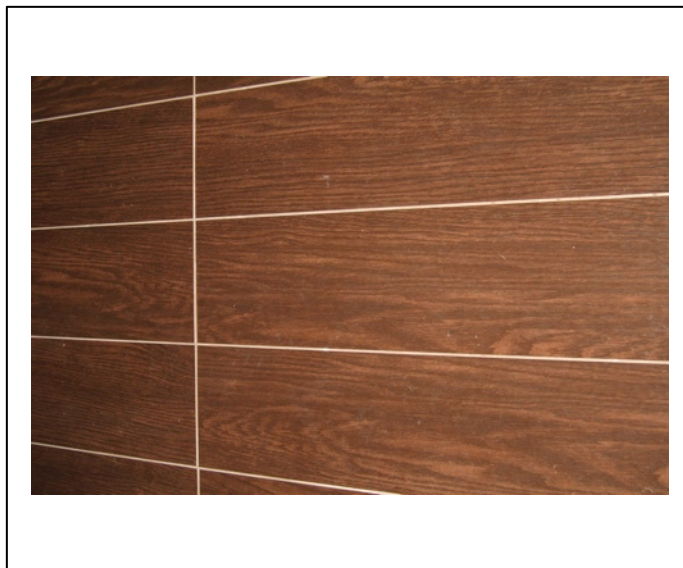
COMMENTS :

SUPPLIER

NAME : PORCELANOSA
ADDRESS : Otterspool Way, Watford, Hertfordshire, WD25 8HL, UK
TELEPHONE : +44 (0) 870 8110 300
FACSIMILE : +44 (0) 870 8110 580
CONTACT : Ian Hughes
EMAIL : ian.hughes@procelanosa.co.uk

QUANTITY
CURRENCY
COST PER M²
COST PER LINEAR M
TOTAL COST

Alternative products/suppliers may not be applicable to this product due to copyright. Any alternatives should be approved by Hilton



SPECIFICATION CONTROL SHEET – BATHROOM OPTION A

PROJECT : HILTON GARDEN INN CONTROL No : **BTH-A-02**
PROJECT NO : DRAWING REF :
DATE : Oct-07 ITEM : WALL FEATURE STRIP TILE
AREA : OPTION A

DESCRIPTION : Vertical feature strip glass mosaic linear tiles

CODE : P31452031
COLOUR : Duo Cristal Moka
SIZE : 20 x 31.6 cm

COMMENTS : 1 Vertical strip in shower

SUPPLIER

NAME : PORCELANOSA
ADDRESS : Otterspool Way, Watford, Hertfordshire, WD25 8HL, UK
TELEPHONE : +44 (0) 870 8110 300
FACSIMILE : +44 (0) 870 8110 580
CONTACT : Ian Hughes
EMAIL : ian.hughes@procelanosa.co.uk

QUANTITY
CURRENCY
COST PER M²
COST PER LINEAR M
TOTAL COST

Alternative products/suppliers may not be applicable to this product due to copyright. Any alternatives should be approved by Hilton



SPECIFICATION CONTROL SHEET – BATHROOM OPTION A

PROJECT : HILTON GARDEN INN CONTROL No : **BTH-A-03**
PROJECT NO : DRAWING REF :
DATE : Oct-07 ITEM : WALL TILE
AREA : OPTION A

DESCRIPTION : Ceramic wall tiles

CODE : V12350011
COLOUR : Bambu beige
SIZE : 20 x 33.3 cm

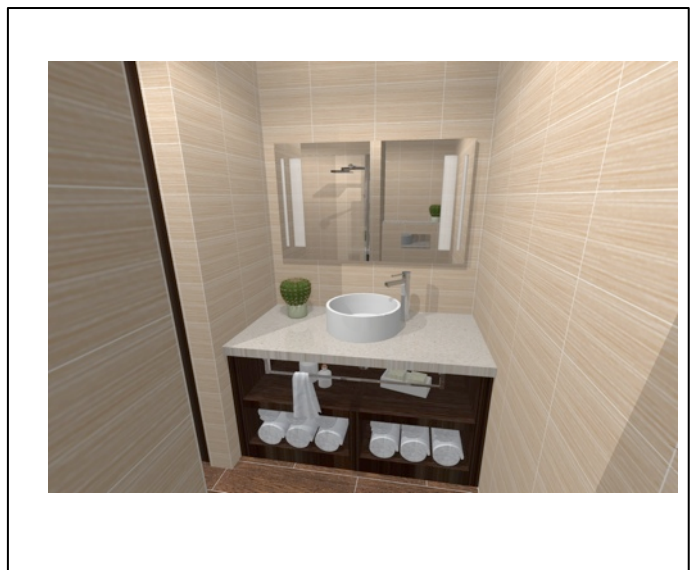
COMMENTS :

SUPPLIER

NAME : PORCELANOSA
ADDRESS : Otterspool Way, Watford, Hertfordshire, WD25 8HL, UK
TELEPHONE : +44 (0) 870 8110 300
FACSIMILE : +44 (0) 870 8110 580
CONTACT : Ian Hughes
EMAIL : ian.hughes@porcelanosa.co.uk

QUANTITY
CURRENCY
COST PER M²
COST PER LINEAR M
TOTAL COST

Alternative products/suppliers may not be applicable to this product due to copyright. Any alternatives should be approved by Hilton



SPECIFICATION CONTROL SHEET – BATHROOM OPTION A

PROJECT : HILTON GARDEN INN
PROJECT NO :
DATE : Oct-07
CONTROL No : **BTH-A-07**
DRAWING REF :
ITEM : DEMISTA PAD
AREA : OPTION A

DESCRIPTION : **Demista pad for wall mirror**

SIZE : 524x524mm size

COMMENTS : To be purchased with main mirror - control sheet HG-DR-B6

SUPPLIER

NAME : Matz Design Ltd
ADDRESS : Inglewood Office, Ellesmere Rd, Whittington, Oswestry, Shropshire SY11 4DJ
TELEPHONE : +44 (0)1691 656811
FACSIMILE : +44 (0) 8452 805959
CONTACT : Reg Lacey
EMAIL : RLacey7680@aol.com

QUANTITY
CURRENCY
COST PER M²
COST PER LINEAR M
TOTAL COST

Alternative products/suppliers may not be applicable to this product due to copyright. Any alternatives should be approved by Hilton



SPECIFICATION CONTROL SHEET – BATHROOM OPTION A

PROJECT : HILTON GARDEN INN CONTROL No : **BTH-A-08**
PROJECT NO : DRAWING REF :
DATE : Oct-07 ITEM : BASIN
AREA : OPTION A

DESCRIPTION : **Surface mounted round basin washbowl**

CODE : 32542
SIZE : 420 mm
COLOUR : Bacino

COMMENTS :

SUPPLIER

NAME : DURAVIT
ADDRESS : P.O.Box 240, 78128 Hornberg, Germany
TELEPHONE : +49 7833 70 0
FACSIMILE : +49 7833 70 289
CONTACT : Toni Mitchell
EMAIL : toni.mitchell@uk.duravit.com

QUANTITY
CURRENCY
COST PER M²
COST PER LINEAR M
TOTAL COST

Alternative products/suppliers may not be applicable to this product due to copyright. Any alternatives should be approved by Hilton



SPECIFICATION CONTROL SHEET – BATHROOM OPTION A

PROJECT : HILTON GARDEN INN CONTROL No : **BTH-A-09**
PROJECT NO : DRAWING REF :
DATE : Oct-07 ITEM : BASIN MIXER TAP
AREA : OPTION A

DESCRIPTION : Basin mixer pillar tap

CODE : 3225000 - Grohe Lineare High Bowl Basin Mixer

FINISH : Polished chrome finish

COMMENTS : See separate attached Grohe specification sheet

SUPPLIER

NAME : WOLSELEY
ADDRESS : Wolseley UK * The Wolseley Center, Harrison Way, Spa Park,
Leamington Spa, CV31 3HH, UK
TELEPHONE : +44 (0)1926 705660
FACSIMILE : +44 (0) 870 901 6675
CONTACT : Sean Collins
EMAIL : sean.collins@wolesley.co.uk

QUANTITY
CURRENCY
COST PER M²
COST PER LINEAR M
TOTAL COST

Alternative products/suppliers may not be applicable to this product due to copyright. Any alternatives should be approved by Hilton



SPECIFICATION CONTROL SHEET – BATHROOM OPTION /

Manufacturer:

Grohe Limited
Blays House
Wick Road
Englefield Green
TW20 0HJ Egham, Surrey
United Kingdom



Phone: +44 (0)871 / 200 3414
Fax: +44 (0)871 / 200 3415
Internet: <http://www.grohe.co.uk>
Contact: Murrad Sher
Mobile: +44 7714 151 048
Email: murrad.sher@grohe.co.uk

Supplier:

Picture/Sample:



SPECIFICATION:

Tall Basin Mixer

UNIT: Lineare Basin Mixer Tall

REFERENCE: 3225000

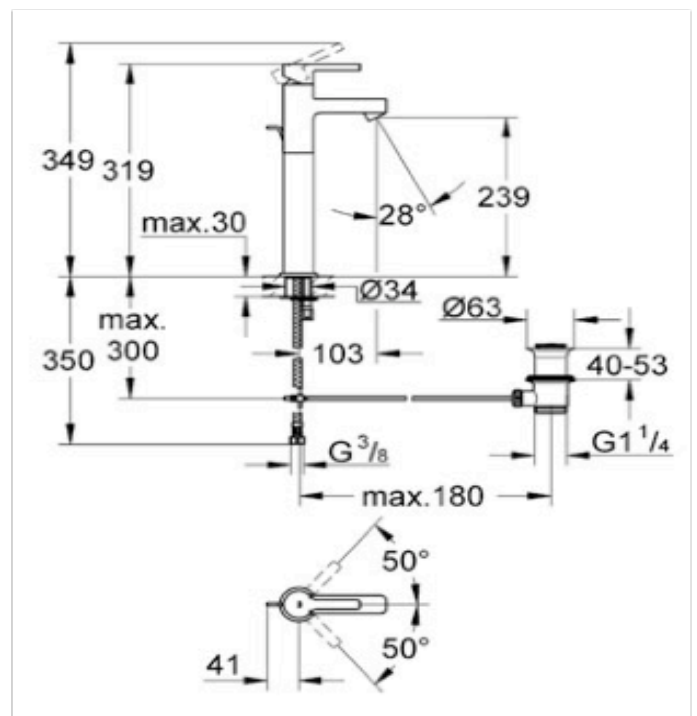
Colour: Chrome

Unit Cost:

Notes:

Lineare
Basin mixer 1/2"
for free-standing basins
Monobloc installation
28 mm ceramic cartridge
with **GROHE SilkMove®**
mousseur aerator (HP)
pop-up waste set 1 1/4"
flexible connection hoses
rapid installation system
Min. recommended pressure 1.0 bar
Balanced hot and cold supplies
Available: February 2007

Technical Details:



SPECIFICATION CONTROL SHEET – BATHROOM OPTION A

PROJECT : HILTON GARDEN INN CONTROL No : **BTH-A-10**
PROJECT NO : DRAWING REF :
DATE : Oct-07 ITEM : SHOWER ARRANGEMENT
AREA : OPTION A

DESCRIPTION : **Shower arrangement**

CODE : Wolesley Grohe
: J49250 19242000 G2000 1/2 Trim Thermostatic Shower Valve With Divertor
28150 28151000 Grohe Relaxa Shower Hose 1500mm
28797000 28797000 Relaxa Shower Rail 600mm
28679 28678000 Relaxa Plus Wall Shower Union
28419000 28419000 Tempesta Handshower Duo 1/2"
28885000 28885000 Retaining Clip

COMMENTS : See separate attached Grohe specification sheet

SUPPLIER


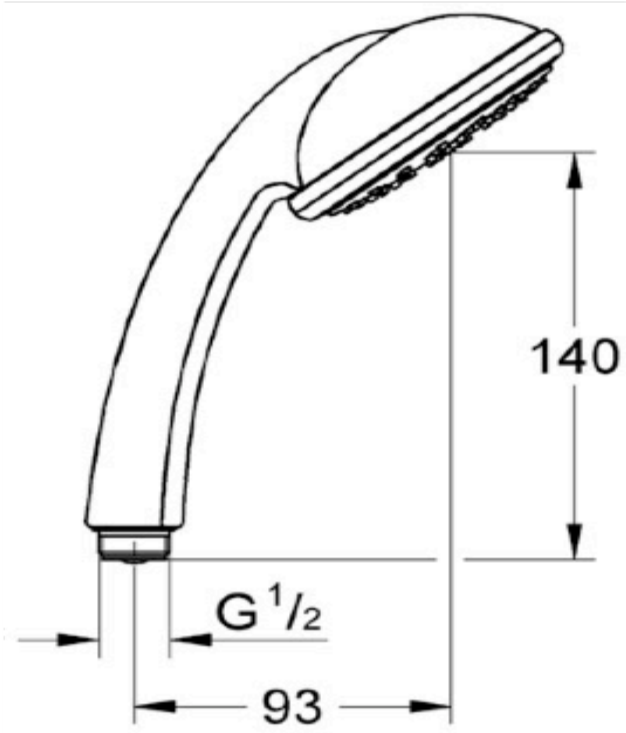
NAME : WOLSELEY
ADDRESS : Wolseley UK * The Wolseley Center, Harrison Way, Spa Park,
Leamington Spa, CV31 3HH, UK
TELEPHONE : +44 (0)1926 705660
FACSIMILE : +44 (0) 870 901 6675
CONTACT : Sean Collins
EMAIL : sean.collins@wolesley.co.uk

QUANTITY
CURRENCY
COST PER M²
COST PER LINEAR M
TOTAL COST

Alternative products/suppliers may not be applicable to this product due to copyright. Any alternatives should be approved by Hilton



SPECIFICATION CONTROL SHEET – BATHROOM OPTION /

<p>Manufacturer: Grohe Limited Blays House Wick Road Englefield Green TW20 0HJ Egham, Surrey United Kingdom Phone: +44 (0)871 / 200 3414 Fax: +44 (0)871 / 200 3415 Internet: http://www.grohe.co.uk Contact: Murrad Sher Mobile: +44 7714 151 048 Email: murrad.sher@grohe.co.uk</p> <p>Supplier:</p>	<p>Picture/Sample:</p> 
<p>SPECIFICATION: Shower Head</p>	<p>Technical Details:</p>
<p>UNIT: Tempesta Duo 1/2"</p>	
<p>REFERENCE: 28419000</p>	
<p>Colour: Chrome</p>	
<p>Unit Cost:</p>	
<p>Notes:</p> <p>Tempesta Handshower Duo, 1/2"</p> <p>Adjustable shower jet Needle Jet / Rain SpeedClean anti-limescale system 8 l/min. flow limiter Min. recommended pressure 1.0 bar</p>	

SPECIFICATION CONTROL SHEET – BATHROOM OPTION /

Manufacturer:

Grohe Limited
Blays House
Wick Road
Englefield Green
TW20 0HJ Egham, Surrey
United Kingdom



Phone: +44 (0)871 / 200 3414
Fax: +44 (0)871 / 200 3415
Internet: <http://www.grohe.co.uk>
Contact: Murrad Sher
Mobile: +44 7714 151 048
Email: murrad.sher@grohe.co.uk

Supplier:

SPECIFICATION:

Metal Shower Rail

UNIT: Relexa Shower Rail 600

REFERENCE: **28797000**

Colour: Chrome

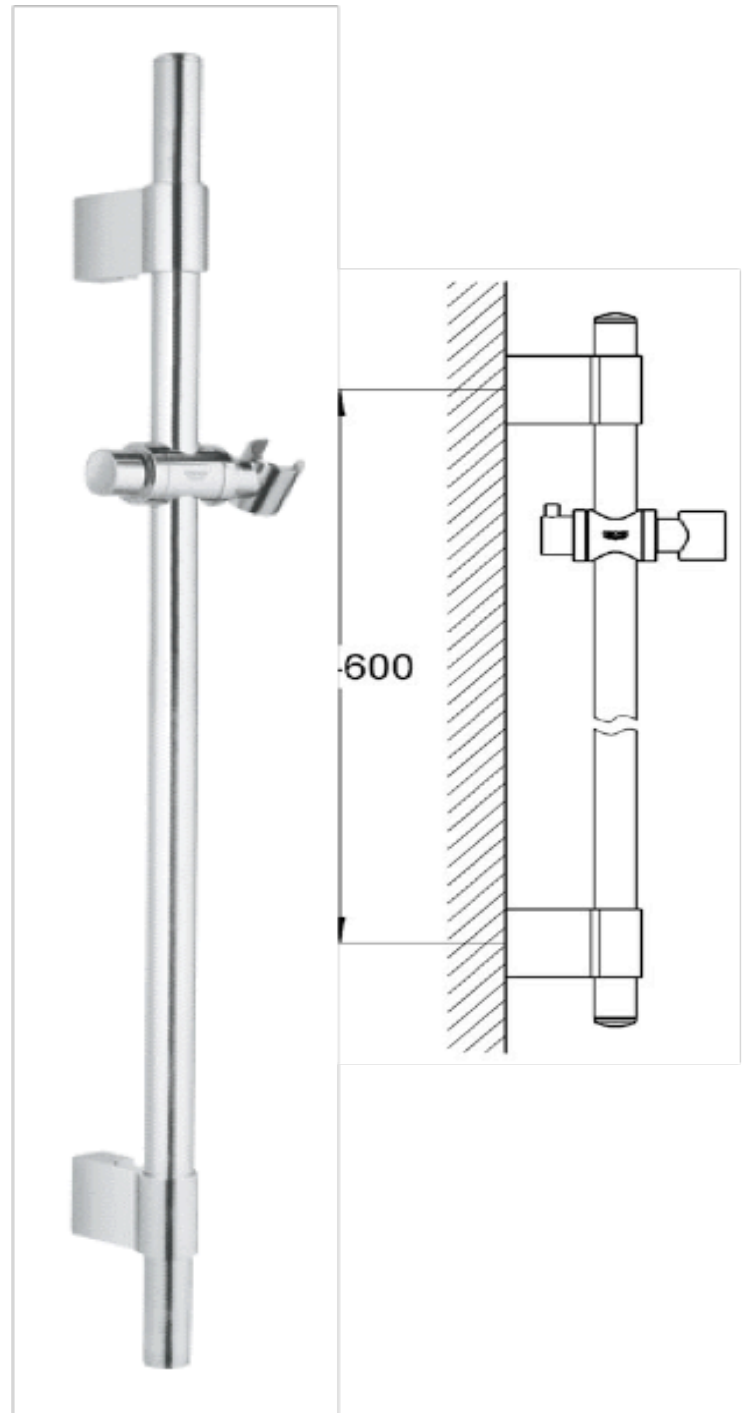
Unit Cost:

Notes:

**Relexa
Shower rail, 600 mm**

Glide element and swivel holder
Suitable for
Corner mounting
Adjustable distance between
wall
Brackets to adapt to existing drill
holes

Picture/Sample/ Technical Details:



SPECIFICATION CONTROL SHEET – BATHROOM OPTION /

Manufacturer:

Grohe Limited
Blays House
Wick Road
Englefield Green
TW20 0HJ Egham, Surrey
United Kingdom



Phone: +44 (0)871 / 200 3414
Fax: +44 (0)871 / 200 3415
Internet: <http://www.grohe.co.uk>
Contact: Murrad Sher
Mobile: +44 7714 151 048
Email: murrad.sher@grohe.co.uk

Supplier:

Picture/Sample:



SPECIFICATION:

Shower Hose 1500mm

UNIT:

REFERENCE: 28151000

Colour: Chrome

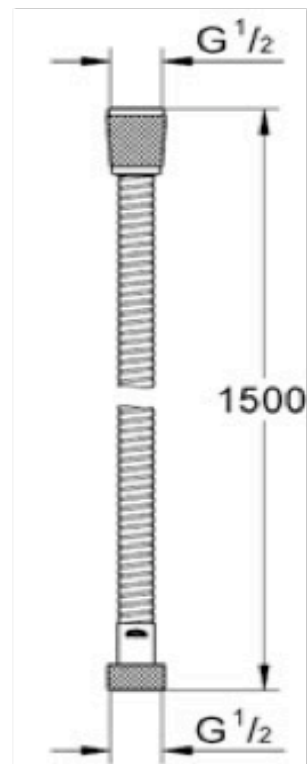
Unit Cost:

Notes:

Relaxa
Relaxaflex hose

1500 mm
1/2" x 1/2"

Technical Details:



SPECIFICATION CONTROL SHEET – BATHROOM OPTION /

<p>Manufacturer: Grohe Limited Blays House Wick Road Englefield Green TW20 0HJ Egham, Surrey United Kingdom Phone: +44 (0)871 / 200 3414 Fax: +44 (0)871 / 200 3415 Internet: http://www.grohe.co.uk Contact: Murrad Sher Mobile: +44 7714 151 048 Email: murrad.sher@grohe.co.uk</p> <p>Supplier:</p>	<p>Picture/Sample:</p> 
<p>SPECIFICATION: Retaining Clip</p>	<p>Technical Details:</p>
<p>UNIT: Retaining Clip</p>	
<p>REFERENCE: 28885000</p>	
<p>Colour: Silver</p>	
<p>Unit Cost:</p>	
<p>Notes:</p> <p>Grohe Retaining Clip Suitable For Relaxa Rail</p>	

SPECIFICATION CONTROL SHEET – BATHROOM OPTION /

Manufacturer:

Grohe Limited
 Blays House
 Wick Road
 Englefield Green
 TW20 0HJ Egham, Surrey
 United Kingdom
 Phone: +44 (0)871 / 200 3414
 Fax: +44 (0)871 / 200 3415
 Internet: <http://www.grohe.co.uk>
 Contact: Murrad Sher
 Mobile: +44 7714 151 048
 Email: murrad.sher@grohe.co.uk



Supplier:

Picture/Sample:



SPECIFICATION:

Shower Outlet Elbow

UNIT: Relaxa Plus Wall Union

REFERENCE: 28678000

Colour: Chrome

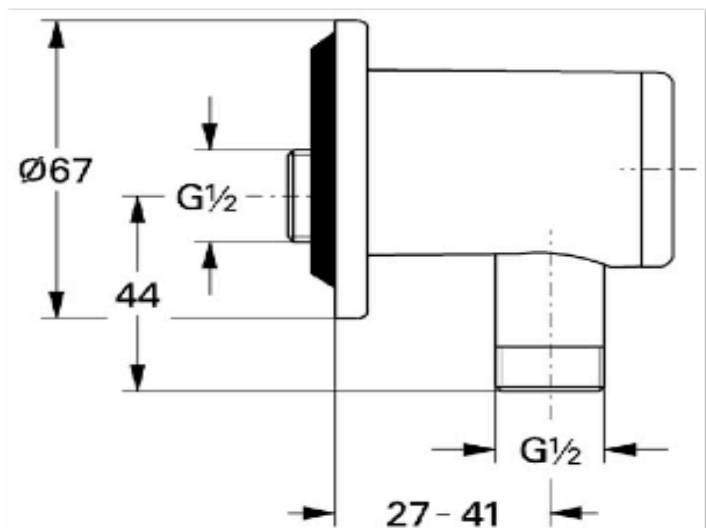
Unit Cost

Notes:

Relaxa plus
 Wall union 1/2"

1/2"elbow union
 protected against backflow

Technical Details:



SPECIFICATION CONTROL SHEET – BATHROOM OPTION /

Manufacturer:

Grohe Limited
Blays House
Wick Road
Englefield Green
TW20 0HJ Egham, Surrey
United Kingdom



Phone: +44 (0)871 / 200 3414
Fax: +44 (0)871 / 200 3415
Internet: <http://www.grohe.co.uk>
Contact: Murrad Sher
Mobile: +44 7714 151 048
Email: murrad.sher@grohe.co.uk

Supplier:

Picture/Sample:



SPECIFICATION:

Concealed Therm Shower Valve

UNIT: G2000Therm Shower MXR

REFERENCE: 34235000

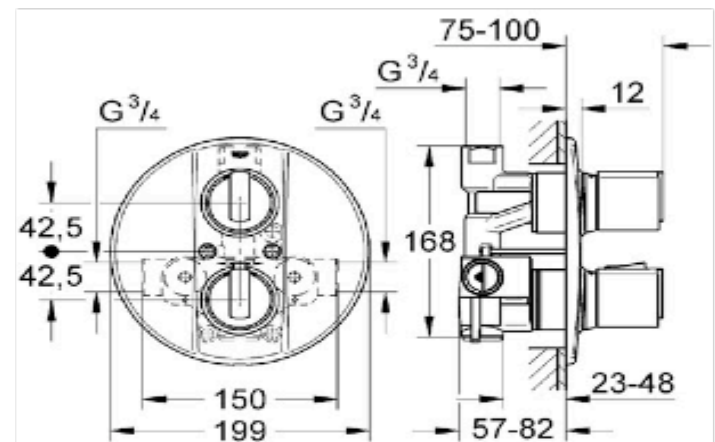
Colour: Chrome

Unit Cost:

Notes:

Grohtherm 2000
Thermostatic shower mixer 3/4"
wall installation
consisting of: concealed body & trim
set complete concealed body 3/4" shut
off top outlet - 3/4" bottom outlet 3/4" -
can only be used
with separate stop valve built-in non
return valve
dirt strainers
Recommended pressure 0.1-5.0 bar
Max. pressure differential 5:1

Technical Details:



SPECIFICATION CONTROL SHEET – BATHROOM OPTION A

PROJECT : HILTON GARDEN INN CONTROL No : **BTH-A-11**
PROJECT NO : DRAWING REF :
DATE : Oct-07 ITEM : SHOWER SCREEN
AREA : OPTION A

DESCRIPTION : **Walk in shower and curved shower screen**

CODE : 1600 x 800 x 900x 800 SPEC, With Raised Drying Area
8 mm toughened safety glass

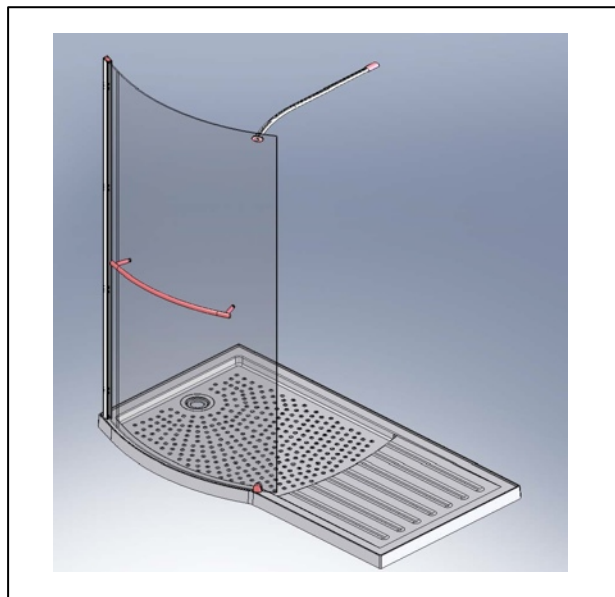
COMMENTS : Left or Right handed trays are available, please specify when ordering.

SUPPLIER

NAME : Aqualux
ADDRESS : Universal Point, Steelmans Road, Off Park Lane, Wednesbury, West Midlands
WS20 9UZ
TELEPHONE : +44 00 7870681922
FACSIMILE : +44 (0) 870 6132
CONTACT : Colin Henderson
EMAIL : colin.henderson@aqualux.co.uk

QUANTITY
CURRENCY
COST PER M²
COST PER LINEAR M
TOTAL COST

Alternative products/suppliers may not be applicable to this product due to copyright. Any alternatives should be approved by Hilton



SPECIFICATION CONTROL SHEET – BATHROOM OPTION A

PROJECT : HILTON GARDEN INN CONTROL No : **BTH-A-12**
PROJECT NO : DRAWING REF :
DATE : Oct-07 ITEM : WC
AREA : OPTION A

DESCRIPTION : Wall mounted porcelain wc

CODES : Wolseley Grohe
B03815 Ideal Standard white wall mounted wc pan white
B84080 Ideal Standard white wc seat and cover white
J44451 38526000 Grohe SL 820mm Frame
J44452 3855800M Wall Brackets
J44453 38506000 Grohe Dual Flush Plate CP

COMMENTS :

SUPPLIER

NAME : WOLSELEY
ADDRESS : Wolseley UK * The Wolseley Center, Harrison Way, Spa Park,
Leamington Spa, CV31 3HH, UK
TELEPHONE : +44 (0)1926 705660
FACSIMILE : +44 (0) 870 901 6675
CONTACT : Sean Collins
EMAIL : sean.collins@wolesley.co.uk

QUANTITY
CURRENCY
COST PER M²
COST PER LINEAR M
TOTAL COST

Alternative products/suppliers may not be applicable to this product due to copyright. Any alternatives should be approved by Hilton



SPECIFICATION CONTROL SHEET – BATHROOM OPTION /

Manufacturer:

Grohe Limited
Blays House
Wick Road
Englefield Green
TW20 0HJ Egham, Surrey
United Kingdom



Phone: +44 (0)871 / 200 3414
Fax: +44 (0)871 / 200 3415
Internet: <http://www.grohe.co.uk>
Contact: Murrad Sher
Mobile: +44 7714 151 048
Email: murrad.sher@grohe.co.uk

Supplier:

Picture/Sample:



SPECIFICATION:

WC Framing System

UNIT: Rapid SL 0.82m Frame

REFERENCE: **38526000**

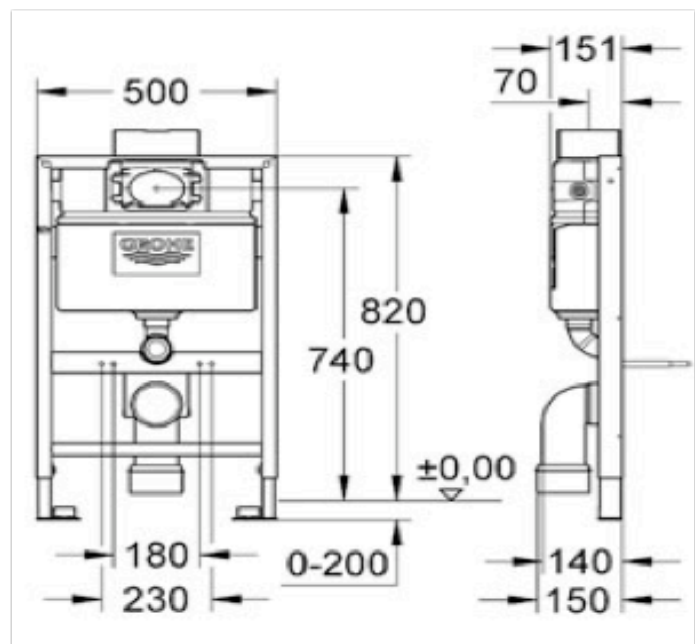
Colour: Blue

Unit Cost:

Notes:

Rapid SL WC 0.82 m
Dual or single flush
0.82 m installation height
Front or top actuation
For on-the-wall installations or studded walls.
Powder coated steel frame, self-supporting
For dry-cladding, completely
Pre-assembled with fixed connections for
single or series installation fixing material
2 WC fixing bolts distance of fixing bolts
180/230 mm PP-outlet bend 80/100 mm dia.
inlet and outlet connecting set dual flush
discharge valve pneumatic connection from left
/ right or back insulated against condensation
with angle stop valve 1/2" and flush pipe
without front wall brackets 38 558 00M (pair)

Technical Details:



SPECIFICATION CONTROL SHEET – BATHROOM OPTION /

Manufacturer:

Grohe Limited
Blays House
Wick Road
Englefield Green
TW20 0HJ Egham, Surrey
United Kingdom



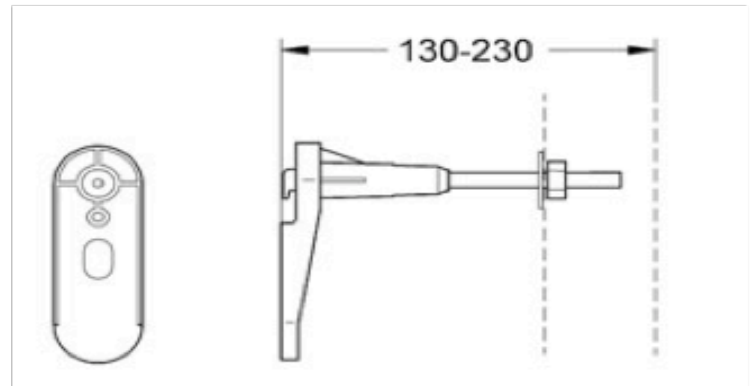
Phone: +44 (0)871 / 200 3414
Fax: +44 (0)871 / 200 3415
Internet: <http://www.grohe.co.uk>
Contact: Murrad Sher
Mobile: +44 7714 151 048
Email: murrad.sher@grohe.co.uk

Supplier:

Picture/Sample:



Technical Details:



SPECIFICATION:

Frame Brackets

UNIT: Rapid Front Wall Brackets

REFERENCE: 3855800M

Colour:

Unit Cost:

Notes:

Rapid SL Front wall brackets

for against-the-wall installations
for fixing the elements at the brick-wall
or in front of the studded wall
steady vertical adjustment from 130 -
230 mm
fixing material
2 pieces

SPECIFICATION CONTROL SHEET – BATHROOM OPTION /

Manufacturer:

Grohe Limited
Blays House
Wick Road
Englefield Green
TW20 0HJ Egham, Surrey
United Kingdom



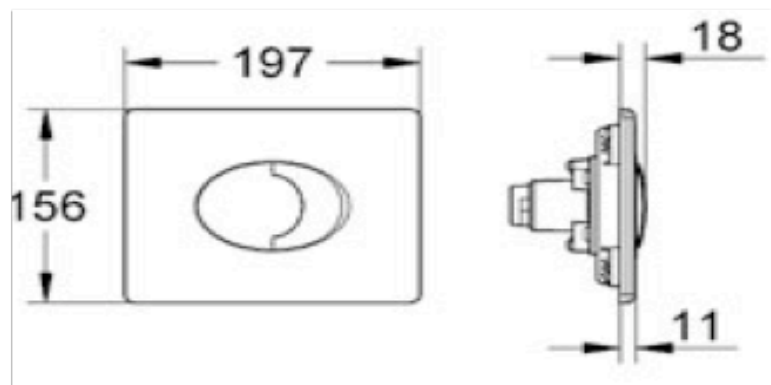
Phone: +44 (0)871 / 200 3414
Fax: +44 (0)871 / 200 3415
Internet: <http://www.grohe.co.uk>
Contact: Murrad Sher
Mobile: +44 7714 151 048
Email: murrad.sher@grohe.co.uk

Supplier:

Picture/Sample:



Technical Details:



SPECIFICATION:

WC Flush Plate

UNIT: Dual Flush Front Plate

REFERENCE: 38506000

Colour: Chrome

Unit Cost:

Notes:

Skate Air
WC Wall plate

for horizontal installation
156 x 197 mm
for pneumatic drop valve
made of ABS

SPECIFICATION CONTROL SHEET – BATHROOM OPTION A

PROJECT : HILTON GARDEN INN CONTROL No : **BTH-A-13**
PROJECT NO : DRAWING REF :
DATE : Oct-07 ITEM : TOILET ROLL HOLDER
AREA : OPTION A

DESCRIPTION : **Wall mounted toilet roll holder**

:

CODE : NB 43 Hotel covered toilet roll holder
FINISH : Polished stainless steel

COMMENTS :

SUPPLIER

NAME : WATERBURY
ADDRESS : 60 Adams Street, Nechells, Birmingham, B7 4LT, UK
TELEPHONE : +44 (0) 121 333 6062
FACSIMILE : +44 (0) 121 333 6459
CONTACT : John Armstrong
EMAIL : john.armstrong@waterburys.co.uk

QUANTITY
CURRENCY
COST PER M²
COST PER LINEAR M
TOTAL COST

Alternative products/suppliers may not be applicable to this product due to copyright. Any alternatives should be approved by Hilton



SPECIFICATION CONTROL SHEET – BATHROOM OPTION A

PROJECT : HILTON GARDEN INN CONTROL No : **BTH-A-14**
PROJECT NO : DRAWING REF :
DATE : Oct-07 ITEM : SPARE TOILET ROLL HOLDER
AREA : OPTION A

DESCRIPTION : **Wall mounted spare toilet roll holder**

CODE : SC20 Science spare toilet roll holder
FINISH : Chrome plated to BS1224 SC2 1970
Brass tube rail with silver soldered joints
Zinc diecast wall brackets

COMMENTS :

SUPPLIER

NAME : WATERBURY
ADDRESS : 60 Adams Street, Nechells, Birmingham, B7 4LT, UK
TELEPHONE : +44 (0) 121 333 6062
FACSIMILE : +44 (0) 121 333 6459
CONTACT : John Armstrong
EMAIL : jonh.armstrong@waterburys.co.uk

QUANTITY
CURRENCY
COST PER M²
COST PER LINEAR M
TOTAL COST

Alternative products/suppliers may not be applicable to this product due to copyright. Any alternatives should be approved by Hilton



SPECIFICATION CONTROL SHEET – BATHROOM OPTION A

PROJECT : HILTON GARDEN INN CONTROL No : **BTH-A-15**
PROJECT NO : DRAWING REF :
DATE : Oct-07 ITEM : TOWEL PIGEON HOLES
AREA : OPTION A

DESCRIPTION : **Facia panel mounted towel pigeon holes**

FINISH : American Walnut to match casegoods and doors

COMMENTS :

SUPPLIER

NAME : MAIN CONTRACTORS ITEM
ADDRESS :
TELEPHONE :
FACSIMILE :
CONTACT :
EMAIL :

QUANTITY
CURRENCY
COST PER M²
COST PER LINEAR M
TOTAL COST

Alternative products/suppliers may not be applicable to this product due to copyright. Any alternatives should be approved by Hilton



SPECIFICATION CONTROL SHEET – BATHROOM OPTION A

PROJECT : HILTON GARDEN INN CONTROL No : **BTH-A-16**
PROJECT NO : DRAWING REF :
DATE : Oct-07 ITEM : DRYING RACK
AREA : OPTION A

DESCRIPTION : Wall mounted drying rack

CODE : MZ/ TR3B/4840/22/HGI
SIZE : 480 x 400 mm
FINISH : Material to be chrome plated brass, No fixings & joins to be seen
Minimum intrusion into bathroom space (80mm)
Concealed screw fixings

COMMENTS :

SUPPLIER

NAME : Matz Design Ltd
ADDRESS : Inglewood Office, Ellesmere Rd, Whittington, Oswestry, Shropshire SY11 4DJ
TELEPHONE : +44 (0)1691 656811
FACSIMILE : +44 (0) 8452 805959
CONTACT : Reg Lacey
EMAIL : RLacey7680@aol.com

QUANTITY
CURRENCY
COST PER M²
COST PER LINEAR M
TOTAL COST

Alternative products/suppliers may not be applicable to this product due to copyright. Any alternatives should be approved by Hilton



SPECIFICATION CONTROL SHEET – BATHROOM OPTION A

PROJECT : HILTON GARDEN INN CONTROL No : **BTH-A-17**
PROJECT NO : DRAWING REF :
DATE : Oct-07 ITEM : SINGLE ROBE HOOK
AREA : OPTION A

DESCRIPTION : **Wall mounted single robe hook**

CODE : SC05 Science single robe hook
FINISH : Solid brass chrome plated to BS1224 SC2 1970

COMMENTS :

SUPPLIER

NAME : WATERBURY
ADDRESS : 60 Adams Street, Nechells, Birmingham, B7 4LT, UK
TELEPHONE : +44 (0) 121 333 6062
FACSIMILE : +44 (0) 121 333 6459
CONTACT : John Armstrong
EMAIL : jonh.armstrong@waterburys.co.uk

QUANTITY
CURRENCY
COST PER M²
COST PER LINEAR M
TOTAL COST

Alternative products/suppliers may not be applicable to this product due to copyright. Any alternatives should be approved by Hilton



SPECIFICATION CONTROL SHEET – BATHROOM OPTION A

PROJECT : HILTON GARDEN INN CONTROL No : **BTH-A-18**
PROJECT NO : DRAWING REF :
DATE : Oct-07 ITEM : DOOR STOP
AREA : OPTION A

DESCRIPTION : **Wall mounted door stop**

CODE : NB 52 Hotel door stop
SIZE : 115mm
FINISH : Diecast wall bracket, brass tube with rubber buffer
Chrome plated to BS1224 SC2 1970

COMMENTS :

SUPPLIER

NAME : WATERBURY
ADDRESS : 60 Adams Street, Nechells, Birmingham, B7 4LT, UK
TELEPHONE : +44 (0) 121 333 6062
FACSIMILE : +44 (0) 121 333 6459
CONTACT : John Armstrong
EMAIL : jonh.armstrong@waterburys.co.uk

QUANTITY
CURRENCY
COST PER M²
COST PER LINEAR M
TOTAL COST

Alternative products/suppliers may not be applicable to this product due to copyright. Any alternatives should be approved by Hilton



SPECIFICATION CONTROL SHEET – BATHROOM OPTION A

PROJECT : HILTON GARDEN INN CONTROL No : **BTH-A-19**
PROJECT NO : DRAWING REF :
DATE : Oct-07 ITEM : BIN
AREA : OPTION A

DESCRIPTION : **Bathroom Bin**

CODE : NB 57 Pedal bin
FINISH : Pedal bin polished chrome finish
Polished stainless steel, 5 litre

COMMENTS :

SUPPLIER

NAME : WATERBURY
ADDRESS : 6o Adams Street, Nechells, Birmingham, B7 4LT, UK
TELEPHONE : +44 (o) 121 333 6o62
FACSIMILE : +44 (o) 121 333 6459
CONTACT : John Armstrong
EMAIL : jonh.armstrong@waterburys.co.uk

QUANTITY
CURRENCY
COST PER M²
COST PER LINEAR M
TOTAL COST

Alternative products/suppliers may not be applicable to this product due to copyright. Any alternatives should be approved by Hilton



SPECIFICATION CONTROL SHEET – BATHROOM OPTION A

PROJECT : HILTON GARDEN INN CONTROL No : **BTH-A-20**
PROJECT NO : DRAWING REF :
DATE : Oct-07 ITEM : TOILET BRUSH AND HOLDER
AREA : OPTION A

DESCRIPTION : Toilet brush and holder

CODE : NB 58 Hotel toilet brush holder
FINISH : Stainless steel bracket for wall mounting
Brass construction
Chrome plated to BS1224 SC2 1970
White nylon bristle brush

COMMENTS :

SUPPLIER

NAME : WATERBURY
ADDRESS : 60 Adams Street, Nechells, Birmingham, B7 4LT, UK
TELEPHONE : +44 (0) 121 333 6062
FACSIMILE : +44 (0) 121 333 6459
CONTACT : John Armstrong
EMAIL : john.armstrong@waterburys.co.uk

QUANTITY
CURRENCY
COST PER M²
COST PER LINEAR M
TOTAL COST

Alternative products/suppliers may not be applicable to this product due to copyright. Any alternatives should be approved by Hilton



SPECIFICATION CONTROL SHEET – BATHROOM OPTION A

PROJECT : HILTON GARDEN INN CONTROL No : **BTH-A-21**
PROJECT NO : DRAWING REF :
DATE : Oct-07 ITEM : TISSUE BOX COVER
AREA : OPTION A

DESCRIPTION : **Tissue box cover**

CODE : E001526
FINISH : Chrome
COLOUR : 135 w x130 h x 135 D

COMMENTS :

SUPPLIER

NAME : Aslotel
ADDRESS : Aslotel House, Pebble Close, Pebble Coombe, Tadworth, Surrey, KT20 7PA
TELEPHONE : +44 (0) 1372 362533
FACSIMILE : +44 (0) 1372 362284
CONTACT : Martin Brown
EMAIL : martin.brown@aslotel.co.uk

QUANTITY
CURRENCY
COST PER M²
COST PER LINEAR M
TOTAL COST

Alternative products/suppliers may not be applicable to this product due to copyright. Any alternatives should be approved by Hilton



SPECIFICATION CONTROL SHEET – BATHROOM OPTION A

PROJECT : HILTON GARDEN INN CONTROL No : **BTH-A-22**
PROJECT NO : DRAWING REF :
DATE : Oct-07 ITEM : ARTWORK
AREA : OPTION A

DESCRIPTION : **Bathroom artwork**

CODE : Bathroom option 1, CAS7024
SIZE : 375mm x 375mm
FINISH : Artwork printed on 415gsm. Fine Art Canvas using UV resistant pigmented inks. Mounted to and wrapped around 35mm deep panels. Surface treated with two coats of eggshell varnish. The panels need to be faced with a moisture resistant material.

COMMENTS :

SUPPLIER

NAME : Indigo Art Limited
ADDRESS : Indigo House, Brunswick Place, Bootle, Liverpool L20 8DT
TELEPHONE : +44 (0) 151 933 9779
FACSIMILE : +44 (0) 151 922 1524
CONTACT : Glen Hughes
EMAIL : glen@indigoart.co.uk

QUANTITY
CURRENCY
COST PER M²
COST PER LINEAR M
TOTAL COST

Alternative products/suppliers may not be applicable to this product due to copyright. Any alternatives should be approved by Hilton

